

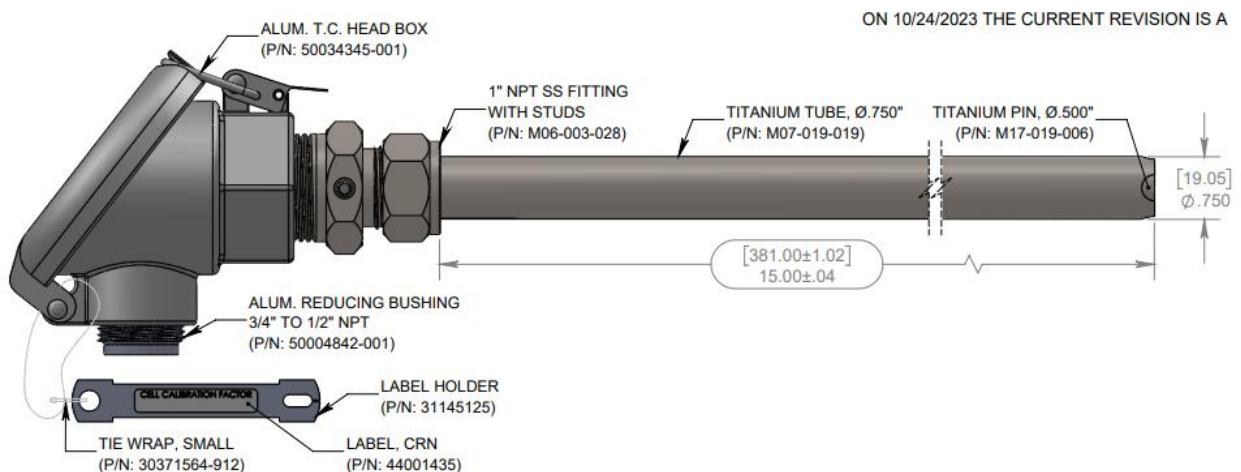
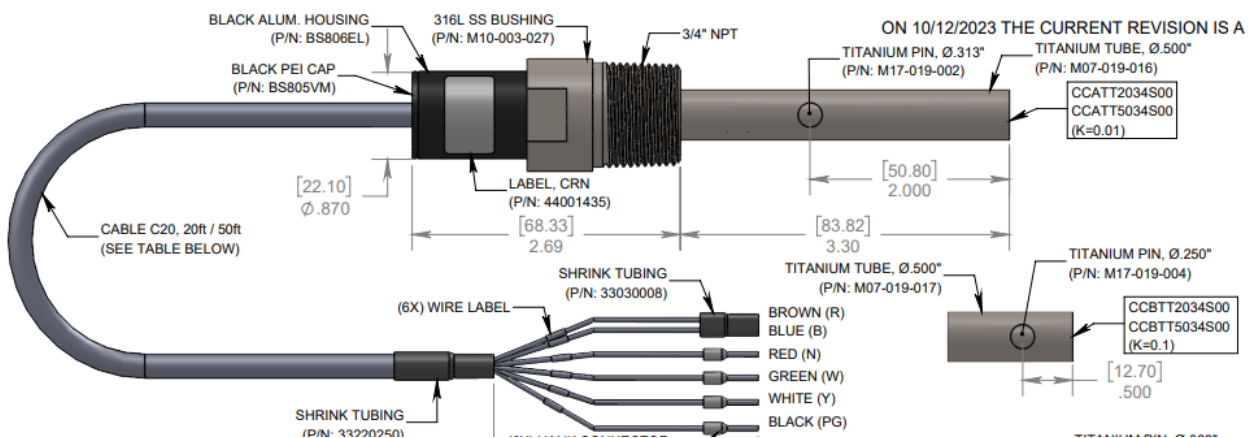
HONEYWELL

CCD Contacting Conductivity Sensors

Technical Specifications

Overview

The CCD contacting conductivity sensors offer a rugged construction for reliable, continuous measurement of electrolytic conductivity in industrial water applications. The CCD can be used for insertion applications with 3/4" MNPT threads or installed directly into a process stream with an optional 3/4" pipe tee. The cells are designed to keep the electrodes and temperature compensator immersed in the stream to assure quick and accurate response to changes in the solution concentration or temperature. The CCD ATC (Automatic Temperature Compensator) is compatible with both analog and microprocessor-based instruments.



Key Features

- Contacting conductivity sensors with various cell constants to cover a wide variety of applications.
- ATC (Automatic Temperature Compensator) standard.
- Extended temperature and pressure range – up to 140°C (284°F) and 250 psi ratings.
- Grounded sensor allows use with 50 ft cable without pre-Amp.
- Design allows for either inline or immersion mounting.

Specifications

ELECTRODE	
Pressure and Temperature Rating	Maximum 250 psi (1000 kPa) and 284°F (140°C)
Operating Range	Depends on cell constant, from 0.01 to 10,000 µS/cm
Mounting	¾" MNPT suitable for either inline or immersion mounting.
Materials	Conductivity: Titanium ATC: 8550 thermistor or 1000 Ohm RTD
Dimensions	150 mm long x 21.6 mm dia. (5.9" x 0.85")
Weight	Approximately 0.23 kg (0.5 lb)

For more information

To learn more about Honeywell's products, visit www.process.honeywell.com or contact your Honeywell account manager.

Honeywell Process Solutions

Honeywell Automation India Ltd.
56,57, Hadapsar Industrial Estate
Pune - 411013, India
www.process.honeywell.com

Contacting Conductivity Sensors

Model Selection Guide

Model Selection Guide
52-52-AS-02 Issue 1

Honeywell Proprietary

Instructions

- Select the desired key number. The arrow to the right marks the selection available.
- Make the desired selections from Tables I through VI using the column below the proper arrow. A dot (•) denotes availability.

Key Number I II III IV
 - - - -

List Price equals the sum of prices for all selections made.

KEY NUMBER - Contacting Conductivity Sensors

Description	Selection	STD LT
Contacting Conductivity Sensors	CCD ↓	\$

TABLE I - Cell Constant and Automatic Temperature Compensation (ATC)

Cell Constant	Cell Constant 0.01 Titanium	A T _	•	\$
	Cell Constant 0.1 Titanium	B T _	•	\$
	Cell Constant 1.0 Titanium	C T _	•	\$
	Cell Constant 10.0 Titanium	D T _	•	\$
	Cell Constant 50.0 Monel (Note 1)	E M _	•	\$
ATC	8550 Thermistor	_ _ T	•	\$
	1000 Ohm RTD	_ _ R	•	\$

TABLE II - Electrical Connections

Electrical Connection	20' tinned cable	20	•	\$
	50' tinned cable	50	•	\$
	Quick Disconnect	QD	•	\$
	Junction Box	JB	•	\$

TABLE III - Process Connections and Materials

Process Connections	3/4" MNPT SS - 4973 style	34S	•	\$
	1" MNPT SS - 4905 style	10C	•	\$
	1 1/4" MNPT SS- 4909 style	14S	•	\$
	1 1/4" MNPT - 4908 Replacement only	14R	•	\$

TABLE IV - Options

Options	Stainless Steel Tag	S _	•	\$
	None	0 -	•	\$
	Calibration Certificate	- C	•	\$
	None	- 0	•	\$

Note 1: Not available with 3/4" NPT size

Accessories and Kits	Part Number	Description
	ASC-CCD20	Quick Disconnect 20 ft cable
	ASC-CCD50	Quick Disconnect 50 ft cable

STD LT = Standard Lead Time
Other options will have longer LT